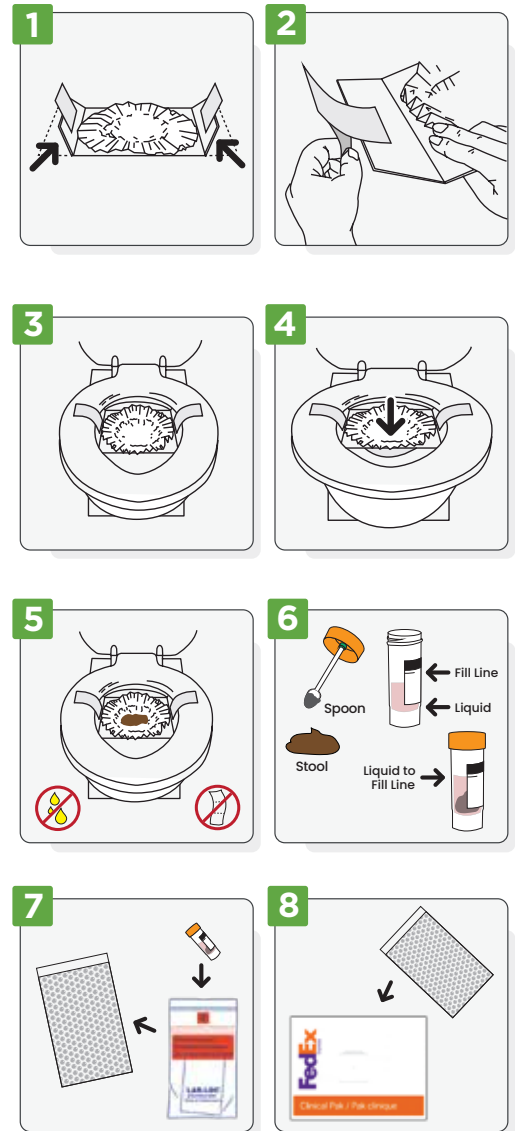


How to Use the Stool Collection Kit

! Samples for testing should be obtained from individuals with signs and/or symptoms of gastrointestinal infection.

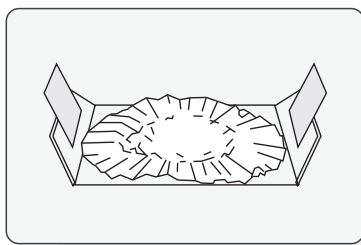
1. Prior to the collection of stool, make sure you have emptied your bladder.
2. Place the collection container on flat surface and fold side flaps up (**Figure 1**).
3. Peel backing off adhesive tape on both sides of the container (**Figure 2**).
4. Place container onto toilet bowl towards the back of the bowl and attach tape to top of toilet seat. Side flaps should be up against bottom of toilet seat (**Figure 3**).
5. Shape paper dish into a bowl by depressing the center lightly with fingers (**Figure 4**).
6. Collect your stool in the paper dish. Make sure you only collect stool. No urine or toilet paper should be present in the collection container (**Figure 5**).
7. Once you have collected the stool, open the vial with the orange top carefully as not to spill the contents. *** **DO NOT DRINK THIS LIQUID. TO DO SO WOULD BE HAZARDOUS TO YOUR HEALTH.** Keep out of reach of children and pets.
8. Using the collection spoon attached to the lid of the vial, add enough stool until the liquid reaches the **ARROW** on the vial label (**Figure 6**).
9. Place the lid back onto the vial and tighten. Write the **Patient Name, Date of Birth, and Collection Date** on the vial label. Place the vial in the provided biohazard bag, seal the bag shut, and place the biohazard bag into the bubble wrap pouch (**Figure 7**).
10. Retrieve the test order form provided to you by your physician. Place the completed test order form and the bubble wrap pouch into the labeled FedEx® bag provided in your kit (**Figure 8**). Seal the FedEx® bag completely. Ensure the label is present on the FedEx® bag then locate and ship the bag at a FedEx® shipping center.
11. All specimens must be shipped within 24 hrs of sample collection.



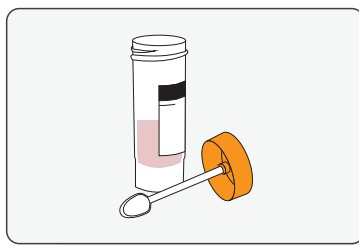
Disposal

1. Remove paper dish holding the remainder of stool by lifting up at its two attachment points.
2. Flush both paper dish and stool.
3. Remove cardboard mount from toilet seat and discard in wastebasket.
4. Wash hands thoroughly with soap and warm water.

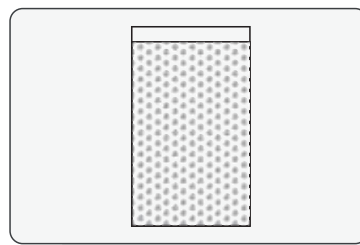
Items Included in Your Kit



Collection Container



Sample Transport Vial



Bubble Wrap Pouch



Biohazard Bag



FedEx® Bag with Label



Test Order Form
(provided by your physician)



Gloves



Ice Packs